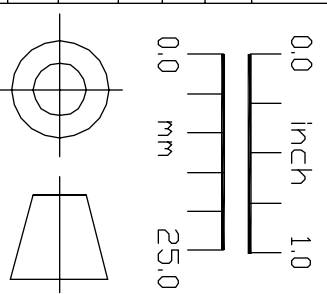


1. 2/3 CAMERA FORMAT - "C" MOUNT
2. BALANCED SPHERICAL, FULL FIELD, AT:
CLOSE-UP 6" TO 12"
NORMAL 20" TO INFINITY

MATERIAL	UNLESS OTHERWISE SPECIFIED DIMENSIONS ARE IN INCHES AND INCLUDE CHEMICALLY APPLIED OR PLATED FINISHES	
	TOLERANCES AS FOLLOWS	
FINISH	DEC. .XXX	±.005
	DEC. .XX	±.010
	FRACT. ±1/64	
	ANGLES ±30'	
	CONCENTRICITY .003 TIR	
	BREAK ALL SHARP EDGES .005 MIN. .010 MAX.	
	SCALE 1X	
	DR. W/B	
	CH.	
	APP.	
	DATE DR. 8-26-92	



D. O. INDUSTRIES ROCHESTER, NEW YORK		SIZE B	REV
HIGH QUALITY 18-108mm f/2.5			
1-14967			