

Direct Bar Light, Square Oblique Light IDBA IDBA-Q

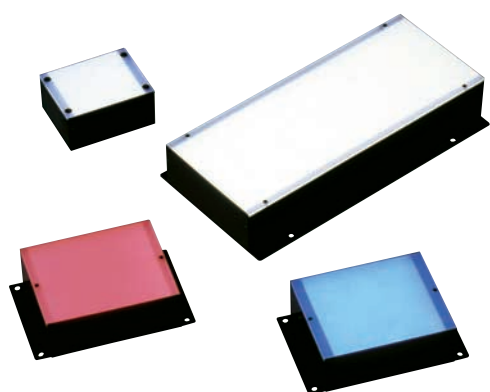
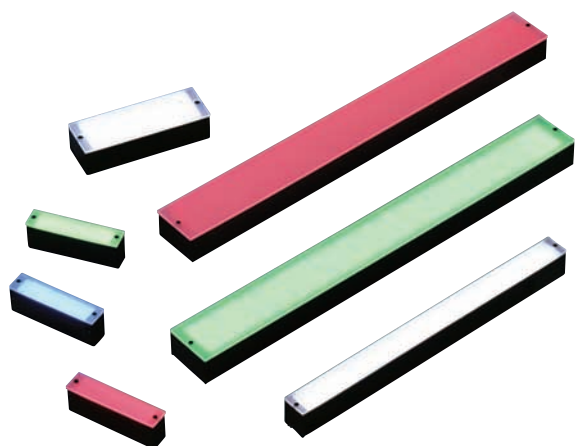
DC 24V products available

Extensively used as oblique light or backlight

This is a direct light type luminescence light where bullet-type LED elements are mounted on a flat board in high density. It has the highest luminance among other type's plane luminescence lights. Heat is conducted to the case by the radiation structure in order to extend the life of the LED elements. The life can be extended more by fixing the light on a large frame, and so on, where the contact area between the light and the frame is large.

Square or rectangle lighting plane with a number of variations in size are available, in addition to the sizes listed in this catalog. When the lighting plane is required to be uniform or the light is used for glossy works, please use a diffusing plate or a polarizing plate, which reduces the shadows of LED elements. The diffusing plate and the polarizing plate can be mounted easily by customers using screws. (For slim models, the plates can be inserted to a guide.) It can be used in a wide range of uses, including detection of irregular surface profiles and edges by oblique light, in addition to use as backlight for silhouette dimensional measurement and inspection of foreign material.

For square oblique light, four angle-adjustable direct bar light planes are provided to a single lighting device, and the irradiating angle is adjustable. The distance to a work is also adjustable. The four lighting planes have their respective circuits; therefore, each lighting plane can be controlled independently for color and luminance. The diffusing plate for improving uniformity of lighting can be mounted with screws (This is not applicable to some models). Variations of red, white, blue, green, mixed-color, infrared, and ultraviolet are available.



| Model (12V) | Irradiating color | Number of LEDs | Power Consumption (W) | SAG (°) | Outline drawing | Model (24V) |
|-------------------|-------------------|----------------|-----------------------|---------|-----------------|-----------------|
| IDBA-C11/14R | R | 6 | 0.3 | 6D | 1 | - |
| IDBA-C11/14 | DW/B/G | 6 | 0.5 | D3 | | - |
| IDBA-C11/14RS-H21 | R | 6 | 0.3 | 6D | | - |
| IDBA-C11/14 S-H21 | DW/B/G | 6 | 0.5 | D3 | 2 | - |
| IDBA-C15/26RS | R | 18 | 0.8 | 6D | 3 | IDBA-C1526RHV |
| IDBA-C15/26 S | DW/B/G | 18 | 1.5 | D5 | | IDBA-C1526 HV |
| IDBA-C27/34R | R | 48 | 2.0 | 6E | 4 | IDBA-C2734RHV |
| IDBA-C27/34 | DW/B/G | 48 | 3.9 | DA | | IDBA-C2734 HV |
| IDBA-C50/15R | R | 36 | 1.5 | 6E | 5 | IDBA-C5015RHV |
| IDBA-C50/15 | DW/B/G | 36 | 2.9 | D8 | | IDBA-C5015 HV |
| IDBA-C100/11R | R | 48 | 2.0 | 6E | 6 | IDBA-C10011RHV |
| IDBA-C100/11 | DW/B/G | 48 | 3.9 | DA | | IDBA-C10011 HV |
| IDBA-C100/15R | R | 72 | 2.9 | 6F | 7 | IDBA-C10015RHV |
| IDBA-C100/15 | DW/B/G | 72 | 5.8 | DE | | IDBA-C10015 HV |
| IDBA-C140/11R | R | 70 | 2.9 | 6F | 8 | IDBA-C14011RHV |
| IDBA-C140/11 | DW/B/G | 70 | 5.8 | DE | | IDBA-C14011 HV |
| IDBA-C132/15R | R | 96 | 3.9 | 70 | 9 | IDBA-C13215RHV |
| IDBA-C132/15 | DW/B/G | 96 | 7.7 | E1 | | IDBA-C13215 HV |
| IDBA-C72/24R | R | 108 | 4.4 | 73 | 10 | IDBA-C7224RHV |
| IDBA-C72/24 | DW/B/G | 70 | 5.8 | DE | | IDBA-C7224 HV |
| IDBA-C25/25RS | R | 36 | 1.5 | 6E | 11 | IDBA-C2525RHV |
| IDBA-C25/25 S | DW/B/G | 36 | 2.9 | D8 | | IDBA-C2525 HV |
| IDBA-C50/50RS | R | 144 | 5.8 | 71 | 12 | IDBA-C5050RHV |
| IDBA-C50/50 S | DW/B/G | 90 | 7.2 | E0 | | IDBA-C5050 HV |
| IDBA-C70/75RS | R | 168 | 6.8 | 72 | 13 | IDBA-C7075RHV |
| IDBA-C70/75 S | DW/B/G | 168 | 13.5 | EC | | IDBA-C7075 HV |
| IDBA-C100/100RS | R | 342 | 13.7 | 77 | 14 | IDBA-C100100RHV |
| IDBA-C100/100 S | DW/B/G | 342 | 27.4 | ED | | IDBA-C100100 HV |
| IDBA-C15/200RS | R | 147 | 6.0 | 71 | 15 | IDBA-C15200RHV |
| IDBA-C15/200 S | DW/B/G | 147 | 11.8 | E9 | | IDBA-C15200 HV |
| IDBA-C185/30RS | R | 216 | 8.7 | 73 | 16 | IDBA-C18530RHV |
| IDBA-C185/30 S | DW/B/G | 216 | 17.3 | F4 | | IDBA-C18530 HV |
| IDBA-C300/24RS | R | 426 | 17.1 | 7A | 17 | IDBA-C30024RHV |
| IDBA-C300/24 S | DW/B/G | 426 | 34.1 | - | | IDBA-C30024 HV |
| IDBA-Q230R | R | 12 × 4 | 2.0 | - | 18 | - |
| IDBA-Q230 | DW/B/G | 12 × 4 | 3.9 | - | | - |
| IDBA-Q230RS | R | 12 × 4 | 2.0 | - | 19 | - |
| IDBA-Q230 S | DW/B/G | 12 × 4 | 3.9 | - | | - |
| IDBA-QC360R | R | 36 × 4 | 5.8 | - | 20 | IDBA-QC360RHV |
| IDBA-QC360 | DW/B/G | 36 × 4 | 11.6 | - | | IDBA-QC360 HV |
| IDBA-QC690R | R | 108 × 4 | 17.3 | - | 21 | IDBA-QC690RHV |
| IDBA-QC690 | DW/B/G | 70 × 4 | 23.2 | - | | IDBA-QC690 HV |

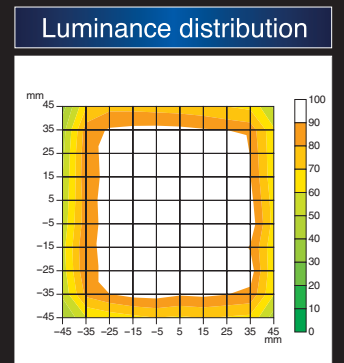
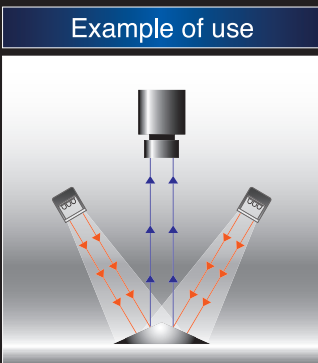
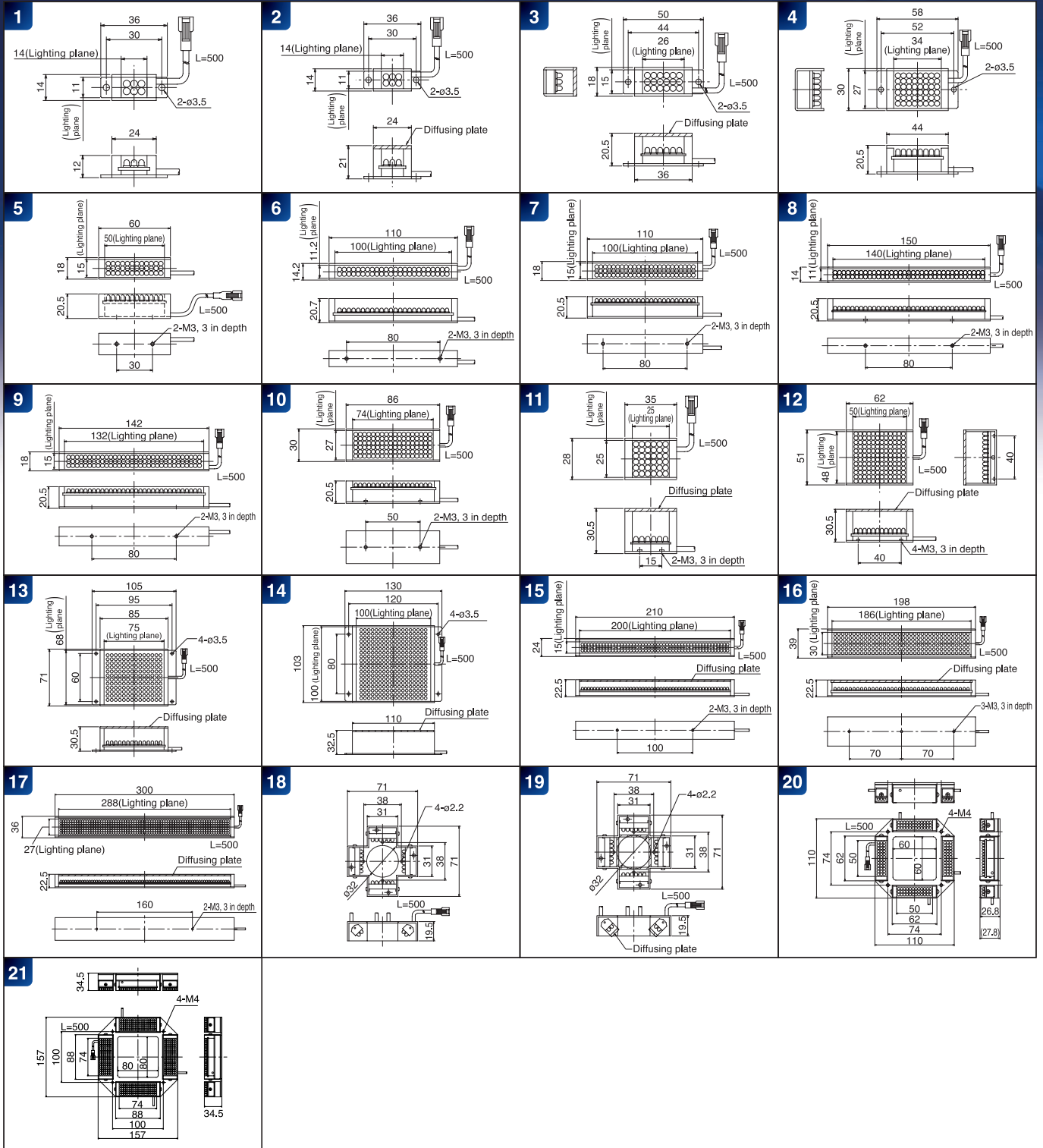
represents DW = white, B = blue, or G = green. The optional diffusing plate / polarizing plate can be mounted.

Number of LEDs, power consumption, SAG value, and outline drawing are for DC24V products. Please contact us for specifications of DC24V products.

Sizes other than the above are also available.

* SAG represents the maximum SAG setting value. For details, refer to page 54.

SAG values are all "FF" only for white (DW) models.



Irradiated from left and right sides Irradiated from above and below

A work surface is highlighted in different ways by changing the irradiation direction.

Work: Coin Light: IDBA-QC360DW

High luminance and super-uniform light can be used except within the peripheral region of 10 mm width on the lighting plane.

Measurement model: IDBA-C100/100DWS