

3iCube 

Dynamics in vision.

USB3.0 CMOS CAMERAS - INDUSTRIAL AND OEM VERSION

neto 
NEW ELECTRONIC TECHNOLOGY

3iCube – DYNAMICS IN VISION

3iCube – meet challenging applications at an optimal price-performance ratio.

3iCube USB3.0 SERIES

NET's easy to use compact camera with USB3.0 interface taps the full potential of the latest CMOS image sensors to set new standards in regard of achievable frames rates and image quality. It supports 24-bit RGB true color while offering a high speed interface to meet the most challenging applications like multi-camera systems.

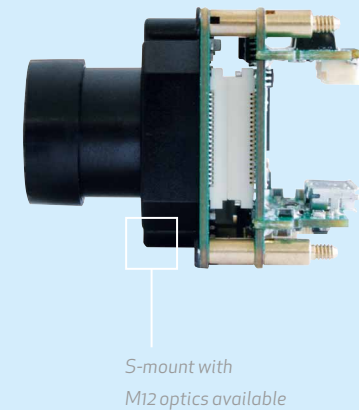
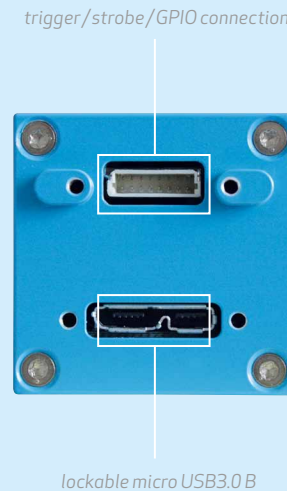
Moreover, the 3iCube series supports monochrome and low light image sensors reflecting an extensive range of selectable resolutions and frame rates for all requirements.

3iCube is available as industrial and board level camera. Its advantages can be put to full use through the integration into professional factory automation, quality inspection, surveillance and non-industrial applications like biometrics and microscopy.

The lightweight board level camera can perform challenging onboard image processing tasks in real-time to meet any particular demand. In return, the 3iCube USB3.0 series is a flexible and fast to implement solution.

High speed connection and power via one USB port turn 3iCube into a universal plug and play camera linked with a notebook, a PC or even for an embedded computer system.

Due to the user friendly interface no additional power supply devices and no expensive cabling is necessary. The included viewer software iControl allows for quick implementation as well as access to and handling of several 3iCube cameras at once.



TECHNICAL DATA – CMOS CAMERA LINE

PRODUCT OVERVIEW

The 3iCube series with USB3.0 5Gbps interface features the latest CMOS image sensors with an excellent image quality for a broad range of applications. NET offers 3iCube with resolutions ranging from 0.4 to 10 megapixel and performing high speed frame rates at full resolution. Its sensor design encompasses global shutter for fast moving

objects and rolling shutter, also with global reset image readout, to capture images with outstanding signal quality. In case of processing image sections, 3iCube offers multiple regions of interest (ROI) with extensively configurable windows embedded on chip. Due to its enhanced image sensor sensitivity, 3iCube realizes a high quantum efficiency and

thus is a perfect fit for applications in the near infrared region (NIR). In addition, long exposure photography is supported by 3iCube. The series allows to benefit fully from the possibilities of state-of-the-art camera technology. 3iCube’s attractive price-performance ratio at an extraordinary quality level speaks for itself.

INDUSTRIAL	IC1044BU	IC1044CU	IC1130BU	IC1130CU	IC4133BU	IC4133CU	IC4133IR	IC4203BU	IC4203CU	IC1300CU	IC1500BU	IC1500CU	IC11000BU	IC11000CU	
BOARD	BC1044BU	BC1044CU	BC1130BU	BC1130CU	BC4133BU	BC4133CU	BC4133IR	BC4203BU	BC4203CU	BC1300CU	BC1500BU	BC1500CU	BC11000BU	BC11000CU	
Resolution(H x V)[px]	752 x 480 / WVGA		1280 x 1024 / SXGA		1280 x 1024 / SXGA			1600 x 1200 / UXGA		2048 x 1536 / QXGA		2592 x 1944 / QSXGA		3840 x 2748 / WQUXGA	
Sensor	CMOS		CMOS		CMOS			CMOS		CMOS		CMOS		CMOS	
Image sensor	MT9V032		MT9M001	MT9M131	EV76C560		EV76C661	EV76C570		MT9T001	MT9P031	MT9P001	MT9J003		
Sensor size	1/3"		1/2"	1/3"	1/1.8"			1/1.8"		1/2"	1/2.5"		1/2.3"		
Pixel size [µm]	6.00 x 6.00		5.20 x 5.20		3.60 x 3.60		5.30 x 5.30			4.50 x 4.50		3.20 x 3.20		2.20 x 2.20	1.67 x 1.67
Frame rate [fps]	86		26	24	60			50		12	14	12	7.5		
Shutter	global		rolling		global; rolling; global reset			global; rolling; global reset		rolling	rolling with global reset		rolling with global reset		
Shutter speed	0.024 - 763 ms	0.062 - 745 ms	0.02 - 394 ms	0.039 - 633 ms	0.031 - 1030 ms			0.031 - 1030 ms		0.056 ms - 50 s		0.085 ms - 89 s	0.074 ms - 77 s	0.146 ms - 135 s	
Dynamic range [dB]	55		68	71	62		63	62		61	70		65		
Binning	2 x 2 / 4 x 4		-		2 x 2			2 x 2		2 x 2 / 4 x 4		2 x 2 / 4 x 4		2 x 2 / 4 x 4	
Skipping	-		640 x 512		640 x 512 / 320 x 256 multiple ROI's / user-defined			640 x 512 / 320 x 256 multiple ROI's / user-def.		1024 x 768 / 512 x 384		1280 x 960 / 640 x 448		1920 x 1344 / 960 x 640	
Aspect ratio	14:9		5:4		5:4			4:3		4:3		4:3		4:3	
Gain [dB]	12		23	24	24			24		18		18		18	
Lens	C-/CS-mount														
Scanning system	progressive scan														
Trigger	external / software														
Strobe	yes														
GPIO	3x														
Interface	USB3.0/5 Gbps														
Dimension (WxHxD) [mm]	industrial: 30 x 30.5 x 31.5 board: 28 x 28 x 22														
USB connection	lockable micro USB3.0 B														
Digital I/O connection	8 pin lockable														
Power consumption [W]	< 1.0		< 1.0		< 1.0			< 1.0		< 1.5		< 1.5		< 1.5	
Operating temperature	0 to +45° C														

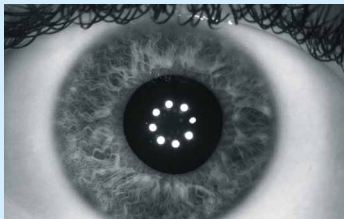
3iCube – when performance and flexibility matter.

APPLICATION & SOFTWARE

Ask us for matching lenses & illumination!

APPLICATION OVERVIEW

3iCube targets industries in rough environments like quality inspection, completeness, surface and printing inspection, bar code, data matrix applications and others. Being also appropriate for non-industrial segments like medicine applications and microscopy, security, document management and access control, the small and efficient 3iCube is a versatile and reliable solution for your application requirements. Because of its high speed interface, 3iCube is particularly suitable for video traffic in HD quality or multi-camera systems.



eyetracking with NIR

CAMERA CUSTOMIZATION

Particular applications require specific camera features and functions. To fulfill these requirements NET is able to offer camera customization, e.g.

NET New Electronic Technology GmbH

Lerchenberg 7
86923 Finning, Germany
Tel: +49 8806 9234 0
Fax: +49 8806 9234 77
info@net-gmbh.com
www.net-gmbh.com

NET Italia S.r.l.

Via Carlo Pisacane, 9
25128 Brescia, Italy
Tel: +39 030 5237 163
Fax: +39 030 5033 293
info@net-italia.it
www.net-italia.it

NET France

2 Allée la Corniche
74940 Annecy-le-Vieux, France
Tel: +33 450 45 22 92
info@net-france-sas.fr
www.net-france-sas.fr

NET USA, Inc.

3037 45th Street
Highland IN 46322, USA
Tel: +1 219 934 9042
Fax: +1 219 934 9047
info@net-usa-inc.com
www.net-usa-inc.com

3RD PARTY SOFTWARE-APPLICATION

The integration of 3iCube USB cameras is supported through a wide variety of common drivers, e.g. for Cognex, and allows an easy handling of the camera.

3iCube is compatible to common software libraries with Direct-X/Direct-Show interface. The software facilitates an easy integration into commercial vision systems from suppliers like Halcon and Matrox.

through onboard processing of specific available NET or customers' algorithms.

OEM APPLICATION

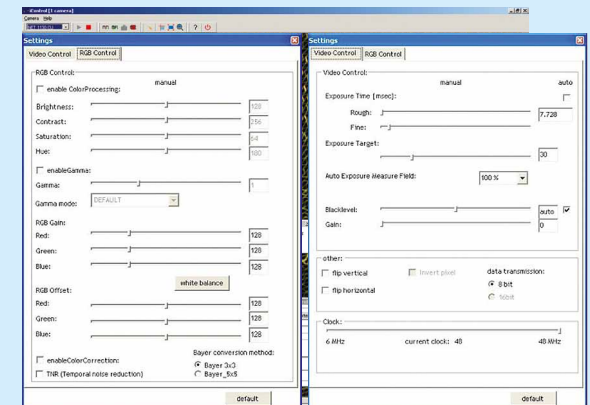
The 3iCube series is suitable as lightweight board level cameras for OEM use due to its compact size. Being a flexible and powerful solution, 3iCube can be offered with custom features such as customized firmware, FPGA/DDR RAM, real-time processing.

VIEWER SOFTWARE

The iControl viewer is a part of the provided software development kit (SDK) and provides an easy and quick access to all 3iCube cameras via Windows and LINUX for testing and evaluation. It allows a fast access to camera and image processing settings, and the creation of customer modes. iControl supports the possibility to save images as jpg, bmp or tiff as well as videos as avi file on a connected computer.

SOFTWARE DEVELOPMENT KIT

3iCube's SDK facilitates the integration into existing and customized image capturing and processing systems. NET supports some of the most popular programming languages for Microsoft: C++, Visual Basic and C#.



iControl user interfaces for easy and quick image capture control and image processing setting

NET Japan Co., Ltd.

2F Shin-Yokohama 214 Bldg.
2-14-2 Shin-Yokohama, Kohoku-ku,
Yokohama-shi, 222-0033, Japan
Tel: +81 45 478 1020
Fax: +81 45 476 2423
info@net-japan.com
www.net-japan.com

NET - We simplify complicated technologies by making them easier to use.

Our strengths are the close understanding of the industrial and medical image processing field and the in-depth application knowledge which we have acquired over many years. Camera technology, CCD and CMOS technology, FPGA programming, hardware and software design are our core skills which we can tap within the company. Our innovative portfolio is supplemented by a wide range of standard and customized lenses and light systems.